

Výroba vozidel

v České republice

listopad 2021



SDRUŽENÍ
AUTOMOBILOVÉHO
PRŮMYSLU

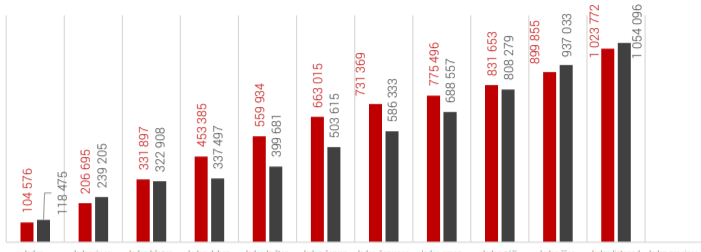


Osobní automobily

kategorie M1

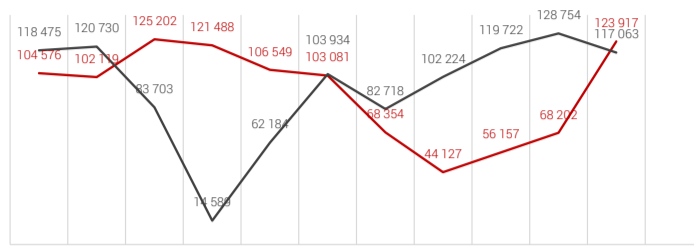
leden-listopad

2021	1 023 772		
2020	1 054 096	-30 324	-2,9%



listopad

2021	123 917		
2020	117 063	6 854	5,9%



ŠKODA AUTO a.s.



leden-listopad	2021	630 317		
	2020	690 380	-60 063	-8,7%
listopad	2021	83 143		
	2020	75 711	7 432	9,8%

Hyundai Motor
Manufacturing Czech s.r.o.



leden-listopad	2021	257 000		
	2020	215 851	41 149	19,1%
listopad	2021	25 400		
	2020	25 762	-362	-1,4%

Toyota Motor
Manufacturing Czech Republic, s.r.o.



leden-listopad	2021	136 455		
	2020	147 865	-11 410	-7,7%
listopad	2021	15 374		
	2020	15 590	-216	-1,4%

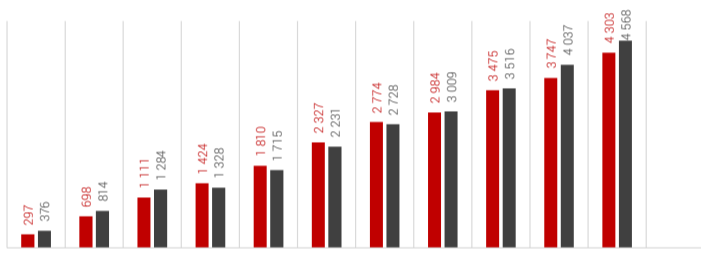


Autobusy

kategorie M2 a M3

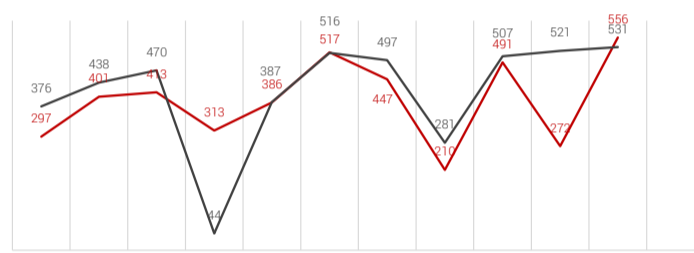
leden-listopad

2021	4 303		
2020	4 568	-265	-5,8%



listopad

2021	556		
2020	531	25	4,7%



Iveco Czech Republic, a. s.



leden-listopad	2021	3 854		
	2020	4 091	-237	-5,8%
listopad	2021	444		
	2020	439	5	1,1%

SOR Libchavy spol. s r.o.



leden-listopad	2021	426		
	2020	453	-27	-6,0%
listopad	2021	108		
	2020	88	20	22,7%

KHMC s.r.o.



leden-listopad	2021	21		
	2020	24	-3	-12,5%
listopad	2021	2		
	2020	4	-2	-50,0%

ŠKODA ELECTRIC a.s.



leden-listopad	2021	2		
	2020	n/a	2	n/a
listopad	2021	2		
	2020	n/a	2	n/a

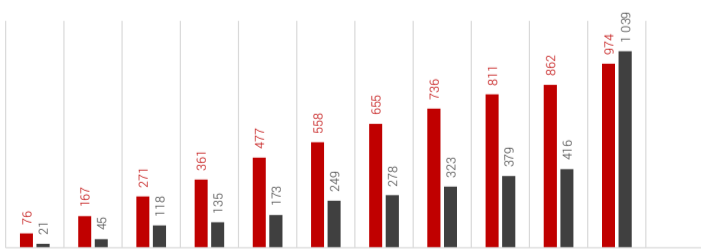


Motocykly

kategorie L

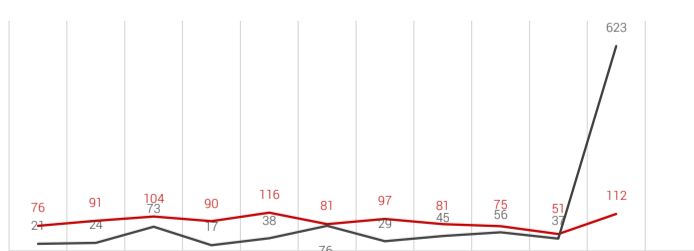
leden-listopad

2021	974		
2020	1 039	-65	-6,3%



listopad

2021	112		
2020	623	-511	-82,0%



JAWA Moto spol. s r.o.



leden-listopad	2021	974		
	2020	1 039	-65	-6,3%
listopad	2021	112		
	2020	623	-511	-82,0%